

# TOUR

# WINNEBAGO



## WHY TOUR?

Unmatched performance of the exclusive Maxum Chassis®

Powered luxury Flexsteel® heat/massage cab seats  
New multi-plex wiring system

Aqua-Hot® zone heating, engine pre-heat, and continuous hot water  
Stainless steel appliances

Available pull-out Tailgate Package  
Available Mobileye® Collision Avoidance System

Exterior entertainment center with HDTV, soundbar, and wireless subwoofer  
Polished porcelain tile floors

Available JBL® 11-Speaker Premium Cab Sound System



On the Cover: 45RD Shiraz Traditional Full-Body Paint

45RD Manchester with Coffee-Glazed Vienna Maple Cabinetry

## The Do-Everything Diesel

You'll love the look of your Tour.® Why? Because with four contemporary and four traditional exterior full-body paint schemes, four interior décor selections, and three glazed cabinet woods, you'll get precisely the look you desire. But looks aren't everything, so the Tour backs it up with high-demand features such as the Glide & Dine™ dining table/buffet and multiple bathrooms.

Several technologies have been added, including multiple USB connection points, an available 11-speaker JBL® Premium Cab Sound System, and a 7" touchscreen OnePlace® multiplex systems control panel. It's all built on a tag-axle Maxum Chassis for a smooth, powerful ride with unmatched storage capacity. The coach of tomorrow has arrived: the Winnebago® Tour.



2016 MotorHome  
READERS' CHOICE  
WINNER  
Class A



45RD Manchester with Coffee-Glazed Vienna Maple Cabinetry

Step foot into the Tour and you know you've entered something special. It starts with the beautiful, solid wood cabinetry of your choice and continues to the Ultraleather™ furniture, including the Rest Easy® extendable sectional sofa in the 42QD. Transform your coach into a home theater with the help of an HDTV and Blu-ray™ home theater with a powerful sound bar and subwoofer. Just looking to wind down with a book? Retract the television (45RD) and enjoy the peaceful glow of the electric fireplace. Several other features are designed to put you at ease, such as the touchscreen OnePlace® systems center that controls the TrueAir® residential air conditioning and all other essential systems. Contour™ dual-pane windows help maintain the thermal efficiency of your coach and are adorned with MCD solar/blackout roller shades for light and privacy control.



45RD MCD Solar/Blackout Roller Shades



45RD Cab Seat Reclined



45RD Flip-up Table



45RD Rest Easy Sofa and Available Ottomans



45RD Vacuum



45RD MCD Solar/Blackout Roller Cab Shades



45RD Flip-up Table Midway



45RD Electric Fireplace and HDTV



45RD Rest Easy Sofa as Bed



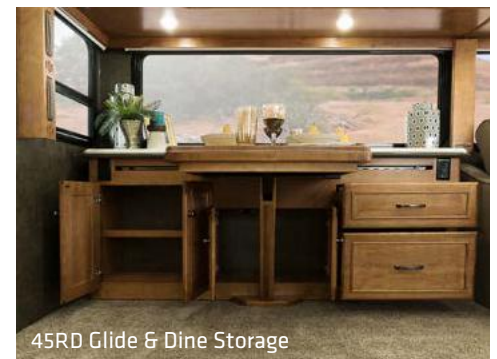
45RD Glide & Dine



45RD Flip-up Table Stored



45RD TV Storage



45RD Glide & Dine Storage



45RD Galley

The galley presents the perfect canvas for your culinary masterpiece with a two-tiered Corian® countertop, matching sink covers, and a decorative backsplash. Stainless steel appliances include a microwave/speedcook oven, residential French door refrigerator with water and an ice dispenser, and a drawer-style dishwasher. Enjoy your meals at the Glide & Dine dining table with four fabric-covered chairs and a side buffet.



45RD Dishwasher



45RD Microwave/Speedcook Oven



45RD Corian Sink Covers



45RD 2-Burner Induction Range



45RD Pull-out Spice Rack



45RD Pantry



45RD Storage



45RD Full-Extension Drawer Slides



45RD Storage Safe



45RD Bedroom

The Tour bedroom provides a restful sanctuary starting with the powered king bed and Ideal Rest® Natural Reserve digital comfort control mattress. Simply touch the remote to lift up the head of the bed for reading or watching the HDTV. Both floorplans boast impressive master baths with Corian countertops, decorative fixtures, and the famous BIG Shower. The 45RD takes the concept to the next level with two sinks and a wall of wardrobe cabinets that includes a hidden washer/dryer.



45RD Bedroom Magic Mirror



45RD Bedroom Magic Mirror HDTV



45RD Wardrobe



45RD Bedroom Drawers



45RD Mid-Coach Bathroom



45RD Master Bathroom



45RD BIG Shower



45RD Mid-Coach Bathroom Vanity



45RD Master Bathroom Vanity



45RD Washer/Dryer





Dash

Flexsteel® known for its comfort and durability, developed the Versa luxury cab seats with six-way power assist adjustments that conform to your body providing a cushioned ride worthy of the smooth Maxum Chassis® performance. A 450-hp. engine delivers power from coast to coast while navigation aids such as sideview cameras and the Rand McNally RV GPS help you safely reach your destination. The GPS is part of the Infotainment Center that features driver and passenger touch screen monitors which control the AM/FM stereo, SiriusXM® satellite radio (subscription not included) from any Bluetooth® connected devices. Add the JBL® Premium Sound system for an 11-speaker surround sound experience unlike any other.



Mobileye Collision Avoidance System



Infotainment Center

The Maxum Chassis provides massive storage capacity, making things more convenient with the sliding storage tray that extends out either side of the coach to access your gear. In no time, you'll have the chairs set up, the two awnings extended, and you'll be watching the game on the HDTV that is part of the standard exterior entertainment center. Bolster your outdoor party credentials by adding the pull-out tailgate package that includes a refrigerator/freezer, single-burner range top, steel countertop, water faucet, and a host of extras.



45RD Powered Acrylic Patio Awnings with LED Lighting, Motion Sensors, Metal Wrap



Exterior Mirror with Defrost and Sideview Camera



Stylized Aluminum Wheel



LED Awning Lights



Exterior Entertainment Center with Soundbar and Subwoofer



Exterior Storage



Exterior Service Center



45RD Automatic Entrance Steps

**Fiberglass Roof**

The crowned, one-piece fiberglass roof is backed by a 10-year limited parts-and-labor roof skin warranty.

**Thermo-Panel® Sidewalls**

By layering fiberglass and high-density block foam insulation with welded aluminum support structures, we create some of the industry's strongest, most durable and lightweight sidewalls.

**E-Coating** An electrodeposition coating helps protect critical steel components.

**Embedded Steel** Metal substructures embedded into the sidewall provide solid attachment points to keep cabinets and appliances mounted securely in place.

**Laser-Cut Tubing** Precision laser cutters create precise joints in structural steel that are stronger and require less welding.



**Interlocking Joints** Specially engineered interlocking joints connect the floor, sidewalls and roof where competitors often rely on simple screws to bear the weight.



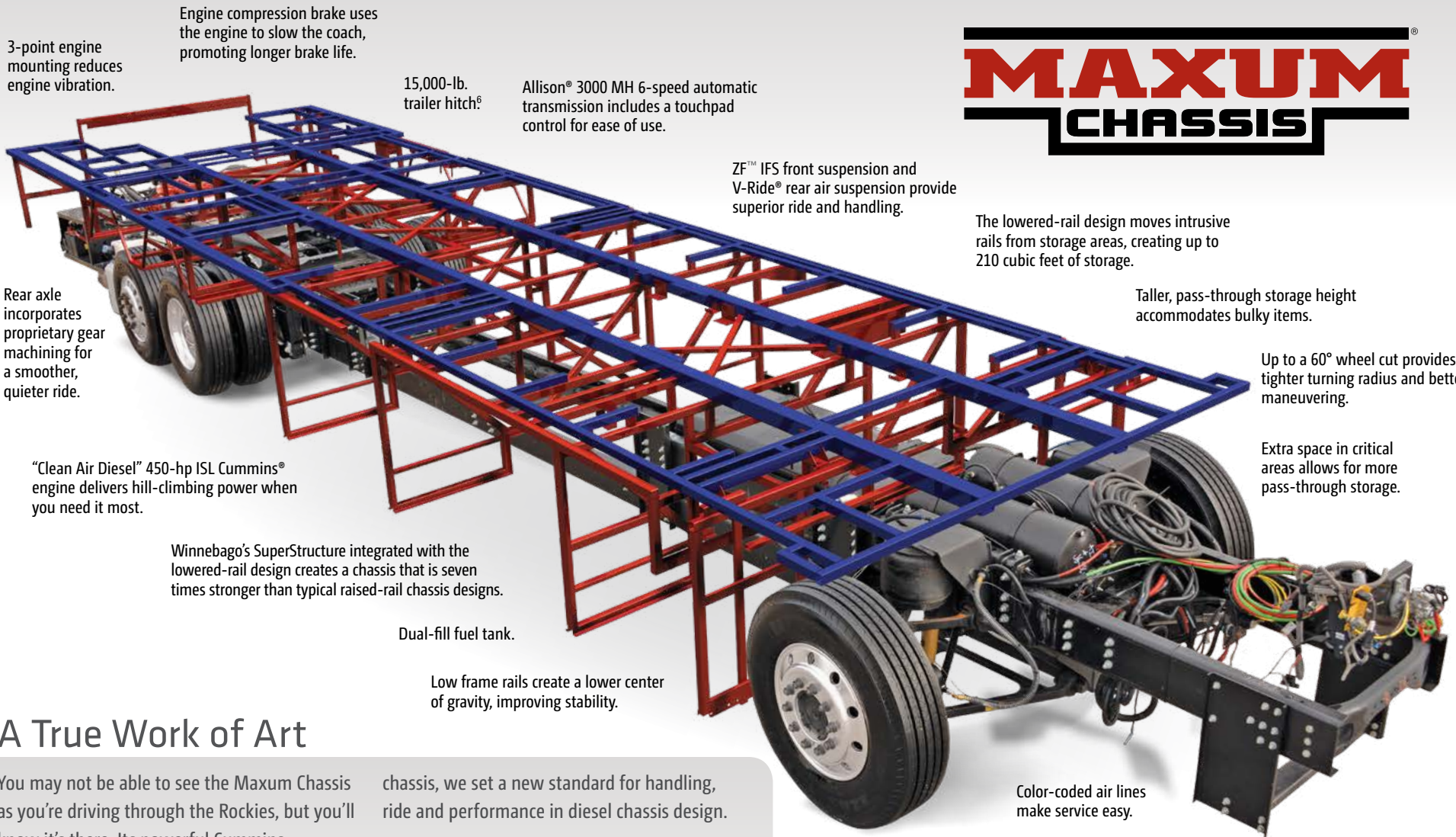
**Solid Framework** Structural extruded aluminum creates an extremely strong solid frame.

**Steel Cab Structure** Our innovative all-steel cab SuperStructure adds durability, strength, and safety.

**SUPER  
STRUCTURE**

BUILT TO LAST

Every coach—from our smallest Class C to our largest diesel-pusher model—is built to Winnebago's® legendary SuperStructure® construction design. It's a process developed and refined over more than 50 years of building some of the strongest, most durable coaches in the industry.



# MAXUM<sup>®</sup> CHASSIS

3-point engine mounting reduces engine vibration.

Engine compression brake uses the engine to slow the coach, promoting longer brake life.

15,000-lb. trailer hitch<sup>9</sup>

Allison<sup>®</sup> 3000 MH 6-speed automatic transmission includes a touchpad control for ease of use.

ZF<sup>™</sup> IFS front suspension and V-Ride<sup>®</sup> rear air suspension provide superior ride and handling.

The lowered-rail design moves intrusive rails from storage areas, creating up to 210 cubic feet of storage.

Rear axle incorporates proprietary gear machining for a smoother, quieter ride.

Taller, pass-through storage height accommodates bulky items.

"Clean Air Diesel" 450-hp ISL Cummins<sup>®</sup> engine delivers hill-climbing power when you need it most.

Up to a 60° wheel cut provides a tighter turning radius and better maneuvering.

Winnebago's SuperStructure integrated with the lowered-rail design creates a chassis that is seven times stronger than typical raised-rail chassis designs.

Extra space in critical areas allows for more pass-through storage.

Dual-fill fuel tank.

Low frame rails create a lower center of gravity, improving stability.

Color-coded air lines make service easy.

## A True Work of Art

You may not be able to see the Maxum Chassis as you're driving through the Rockies, but you'll know it's there. Its powerful Cummins turbo-charged diesel engine and Allison<sup>®</sup> transmission go to work so you don't have to sweat the peaks and valleys ahead.

chassis, we set a new standard for handling, ride and performance in diesel chassis design.

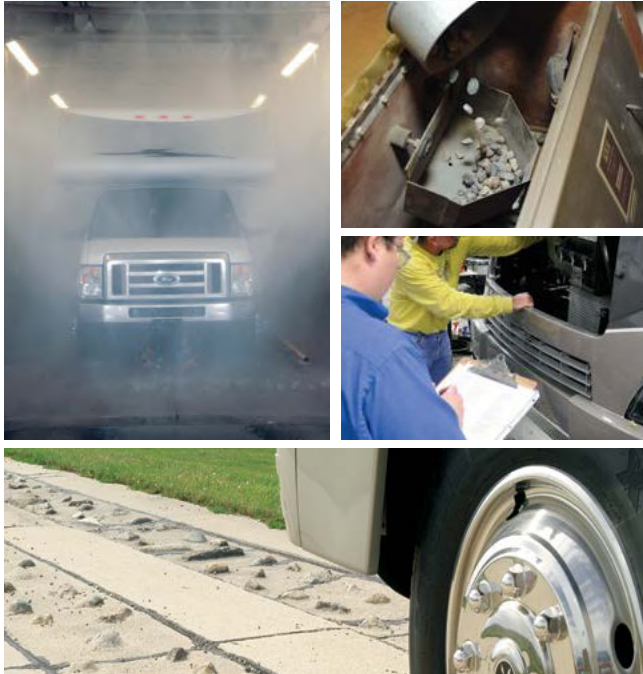
But performance doesn't mean sacrificing storage. The innovative lowered-rail design of the Maxum Chassis opens up a cavernous basement storage compartment, offering up to 210 cubic feet of storage.

Through a strong partnership with Freightliner<sup>®</sup>, the undisputed leader in diesel motorhome

Michelin<sup>®</sup> tires and polished aluminum wheels look sharp.

4-wheel ABS anti-lock air brakes provide fast stopping power.

**TESTING** Before rolling out of our factories, every coach undergoes an extensive 113-point inspection. Each coach also passes a high-pressure water test that simulates rain at a rate of 50-inches per hour to check for leaks. During the design process, our computer simulations, physical testing center, and rigorous test track ensure each model is built to last.



**DETAILS** At Winnebago, we treat the features you can't see with the same care as the ones you can. Look in the access panels of some of our competitors' coaches and you'll see loose insulation and wires haphazardly strewn about. Winnebago maintains a clean fit and finish throughout so your coach will last for the long haul.



**BUILT IN-HOUSE** We process and finish key aluminum parts. We rotocast our own plastic components. In fact, we manufacture most of our own parts so they are designed to fit the space, rather than fitting the space to an awkward off-the-shelf component size.



**SUPER  
STRUCTURE**  
BUILT TO LAST

**W** Visit [BetterBuiltRVs.com](http://BetterBuiltRVs.com) to gain real insight into what goes into a Winnebago motorhome.

**TAKE A TOUR** We're proud of our processes, state-of-the-art facilities, and the people who make Winnebago number one. We invite you to visit our complex in Forest City, Iowa, for a firsthand look at the dedication and technology behind every motorhome we build.

Call (641) 585-6936 or (800) 643-4892 or visit us online at [WinnebagoIld.com/company/visit](http://WinnebagoIld.com/company/visit) for more information.

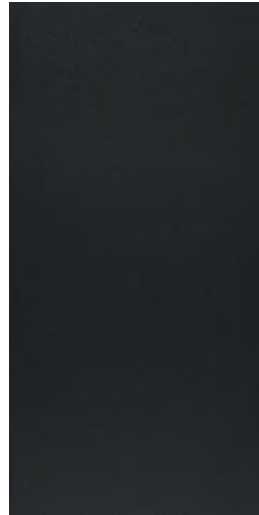


Choose from four fabric collections and two wood finishes.

## Dakota Springs



Ultraleather



Ultraleather Accent



Feature Fabric



Bedspread



Corian Countertop



Wall Board



Porcelain Tile



Coffee-Glazed  
Honey Cherry



Coffee-Glazed  
Vienna Maple

*Winnebago® reserves the right to change décor materials and specifications without notice or obligation.*

Choose from four fabric collections and two wood finishes.

## Manchester



Ultraleather



Ultraleather Accent



Feature Fabric



Bedspread



Corian Countertop



Wall Board



Porcelain Tile



Coffee-Glazed  
Honey Cherry



Coffee-Glazed  
Vienna Maple

Winnebago® reserves the right to change décor materials and specifications without notice or obligation.



Choose from four fabric collections and two wood finishes.

# Serengeti



Ultraleather



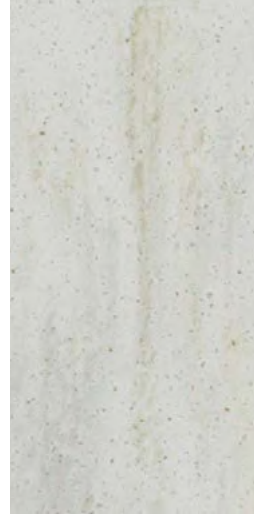
Ultraleather Accent



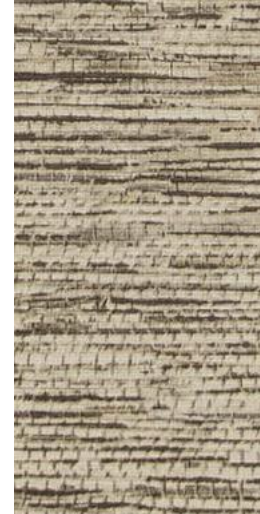
Feature Fabric



Bedsread



Corian Countertop



Wall Board



Porcelain Tile



Coffee-Glazed  
Honey Cherry



Coffee-Glazed  
Vienna Maple

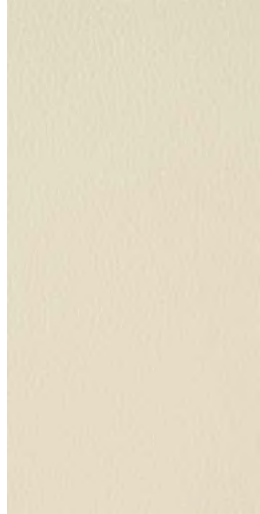
*Winnebago® reserves the right to change décor materials and specifications without notice or obligation.*

Choose from four fabric collections and two wood finishes.

## Shelbyville



Ultraleather



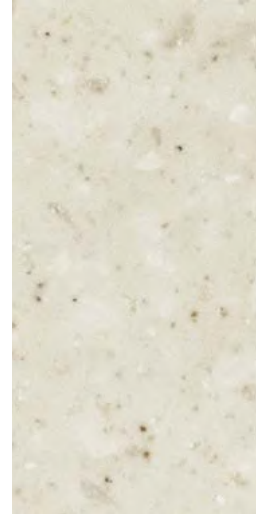
Ultraleather Accent



Feature Fabric



Bedsread



Corian Countertop



Wall Board



Porcelain Tile



Coffee-Glazed  
Honey Cherry



Coffee-Glazed  
Vienna Maple

*Winnebago® reserves the right to change décor materials and specifications without notice or obligation.*

Choose from four traditional full-body paint options or four contemporary full-body paint options.



**Autumn Frost**  
TRADITIONAL FULL-BODY PAINT



**Platinum**  
TRADITIONAL FULL-BODY PAINT



**Shiraz**  
TRADITIONAL FULL-BODY PAINT



**Dark Spiral Gray**  
TRADITIONAL FULL-BODY PAINT

# TOUR Paint



Choose from four traditional full-body paint options or four contemporary full-body paint options.



**Garnet**  
CONTEMPORARY FULL-BODY PAINT



**Azure**  
CONTEMPORARY FULL-BODY PAINT



**Crimson**  
CONTEMPORARY FULL-BODY PAINT

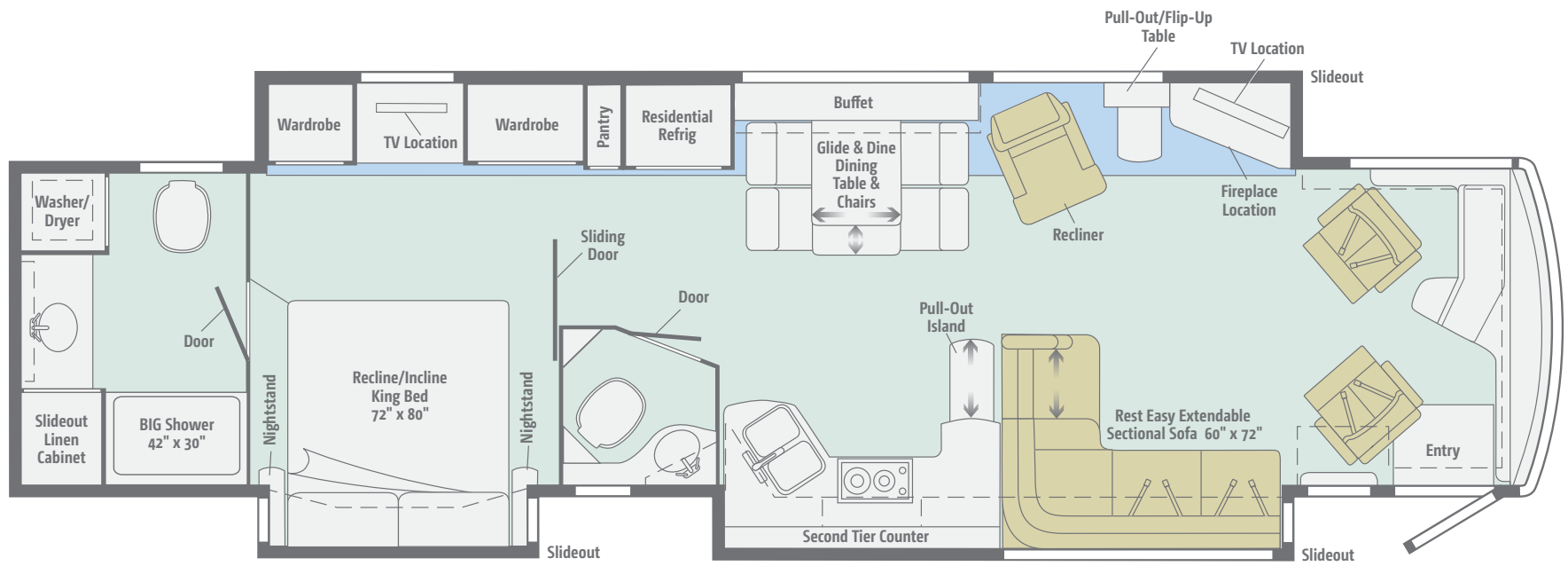


**Silver Birch**  
CONTEMPORARY FULL-BODY PAINT

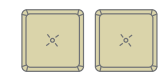
Click here to explore this floorplan's web page.

# 42QD

The 42QD has crafted the perfect lounge with a recliner and Rest Easy extendable sectional sofa facing an angled entertainment center with an HDTV.



2 Ottomans



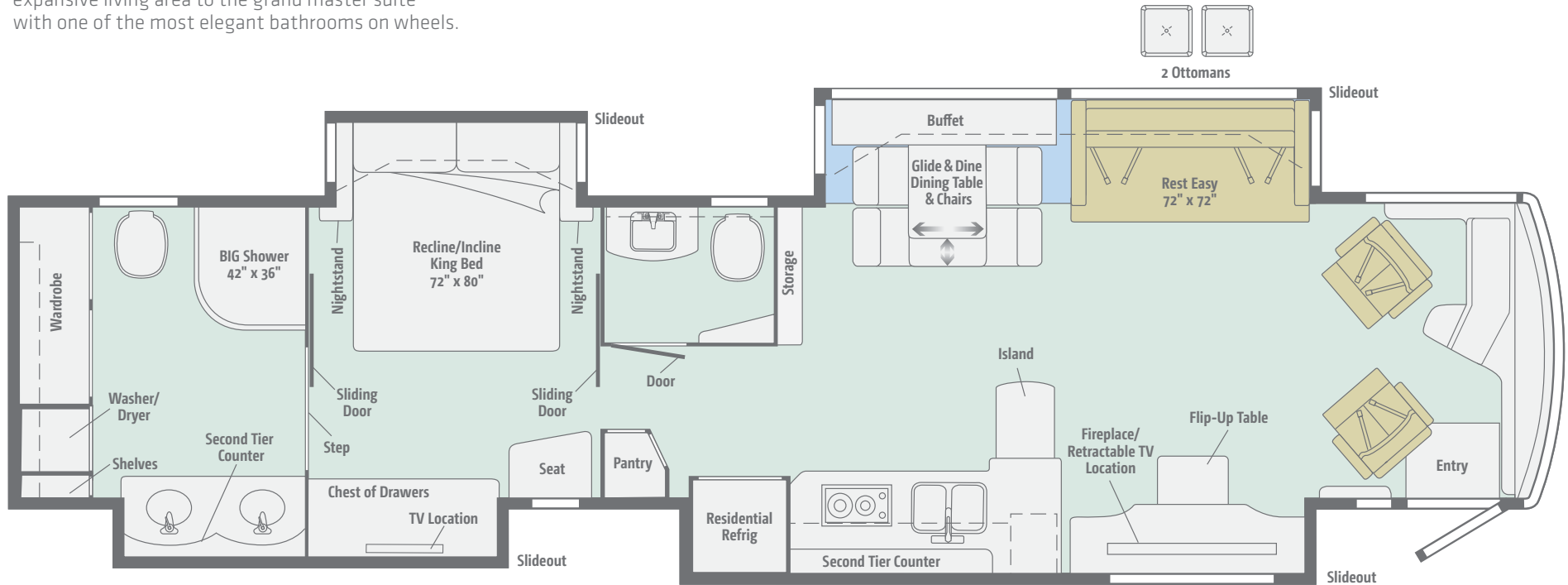
Standard Ultraleather	Carpet	Porcelain Tile

Dimensions shown are for sleeping space only and may vary due to styling differences. Dashed lines denote overhead storage areas. Floorplans and specifications are also available online at [WinnebagoInd.com](http://WinnebagoInd.com).

Click here to explore this floorplan's web page.

# 45RD

Take in 45-feet of luxury, stretching from the expansive living area to the grand master suite with one of the most elegant bathrooms on wheels.



Standard Ultraleather	Carpet	Porcelain Tile

Dimensions shown are for sleeping space only and may vary due to styling differences. Dashed lines denote overhead storage areas. Floorplans and specifications are also available online at [WinnebagoInd.com](http://WinnebagoInd.com).

## WEIGHTS & MEASURES

	<b>42QD</b>	<b>45RD</b>
<b>Length</b>	43'	44'
<b>Exterior Height<sup>1</sup></b>	12'11"	12'11"
<b>Exterior Width<sup>2</sup></b>	8'5.5"	8'5.5"
<b>Exterior Storage<sup>3</sup> (cu. ft.)</b>	196	210
<b>Awning Length</b>	14'6"/17'	16'/17'
<b>Interior Height</b>	7'	7'
<b>Interior Width</b>	8'0.5"	8'0.5"
<b>Freshwater Tank Capacity<sup>4</sup> (gal.)</b>	85	85
<b>Water Heater Capacity (gal.)</b>	Continuous	Continuous
<b>Holding Tank Capacity - Black/Gray<sup>4</sup> (gal.)</b>	51/71	51/95
<b>LP Capacity<sup>5</sup> (gal.)</b>	5.6	5.6
<b>Fuel Capacity (gal.)</b>	150	150
<b>GCWR<sup>6</sup> (lbs.)</b>	60,660	60,660
<b>GVWR (lbs.)</b>	45,660	45,660
<b>GAWR - Front (lbs.)</b>	15,660	15,660
<b>GAWR - Rear (lbs.)</b>	30,000	30,000
<b>Wheelbase</b>	279" + tag	291" + tag

## Optional Package Upgrade

**Pull-Out Tailgate Package** single-burner induction range top, painted steel counter, stainless steel lockable refrigerator/freezer, bottle opener, garbage bag holder, paper towel holder, cold water access port, flexible water spout w/shut off, 15' coil water hose, 110-volt/AC receptacle, large storage area, LED light

## Maxum Chassis<sup>®</sup>

**Cummins<sup>®</sup> ISL 8.9L 450-hp turbo-charged diesel engine** w/3-stage compression brake  
**Adjustable brake and accelerator pedals**  
**Allison<sup>®</sup> 3000 MH 6-speed electronic transmission**  
**Information display center**  
**ZF<sup>™</sup> Independent Front Air Suspension, V-Ride rear air suspension**  
**240-amp. alternator**  
**Air brakes** w/ABS  
**Quick-connect air accessory**

**HWH automatic leveling jacks** w/4-position controls  
**Tow power package** w/7-pin trailer wiring and I.P. wiring  
**Trailer Hitch<sup>6</sup>** 15,000-lb. drawbar/1,500-lb. maximum vertical tongue weight  
**Stylized aluminum wheels**  
**UltraSteer passive tag axle**  
**Side radiator**

## Cab Conveniences

**Flexsteel<sup>®</sup> Versa luxury cab seats** driver and queen passenger seat w/6-way power, power footrest, heat and massage, remote swivel, power lumbar support, manual recline, adjustable armrests  
**3-point seat belts**  
**Infotainment Center with Rand McNally RV GPS** 10.4" touch screen color monitor w/split screen function, 2nd monitor, Rand McNally RV GPS safe & easy routing, amenities & tools, trips & content, turn-by-turn voice guidance, AM/FM radio, steering wheel and handheld remote, SiriusXM<sup>™</sup> (subscription not included), compass, outside temperature, iPod<sup>®</sup>/iPhone<sup>®</sup> audio integration, Bluetooth<sup>™</sup>, color rearview camera, sideview camera display, and house mode feature

**Video camera system**  
**Tilt/telescoping steering wheel** w/infinite adjustable column  
**Power assist steering**  
**Cruise control**  
**Power door locks** w/remote keyless entry  
**Powered adjustable mirrors** w/defrost, sideview camera, and turn signal  
**12-volt powerpoints and USB chargers**  
**Powered stepwell cover**  
**2-speed built-in defroster fans**  
**MCD solar/blackout roller shades** powered for windshield, manual for driver/passenger windows  
**Chassis/house battery radio power switch**  
**Center console cabinet**  
**Instrument panel**  
**Driver and passenger trim panels**  
**4 radio speakers**

## OPTIONAL EQUIPMENT

**JBL Premium Sound radio speakers** (11 speaker system) w/subwoofer  
**Mobiley<sup>®</sup> Collision Avoidance System**

## Interior

**Electric fireplace** adjustable thermostat and flame, handheld remote, electronic timer w/automatic shut-off  
**50" HDTV** (42QD)  
**60" HDTV** (45RD)  
**Blu-ray<sup>™</sup> Home Theater** w/soundbar and subwoofer  
**Dirt Devil<sup>®</sup> central vacuum system** w/VacPan<sup>®</sup>  
**Stackable washer/dryer**  
**Security safe**  
**HDMI 4x4 Matrix central video selection system**  
**Satellite system ready** (front)  
**OnePlace<sup>®</sup> systems center**  
**Contour<sup>™</sup> windows** tinted, dual-pane  
**Soft vinyl ceiling**  
**Powered ventilator fan** w/rain sensor (galley and bathroom)  
**Powered roof vent(s)** (bathroom)

**MCD solar/blackout roller shades**  
**Multi-plex wall switches** w/dimming feature  
**LED ceiling lights**  
**Accent lighting**  
**Digital TV amplified antenna system**  
**Polished porcelain tile floor covering**  
**USB chargers** (cab, dining)  
**110V receptacle** w/USB port (bedroom)

## OPTIONAL EQUIPMENT

**Winegard<sup>®</sup> Rayzar<sup>®</sup> automatic multi-satellite antenna**  
**Winegard<sup>®</sup> Trav'ler<sup>®</sup> automatic multi-satellite antenna** for Dish Network and DIRECTV

## Galley

**Corian<sup>®</sup> countertops, sink covers, and decorative backsplash**  
**Stainless steel microwave/speedcook oven** w/exterior vented range fan  
**2-burner induction range top** w/rapid cooling ceramic glass top  
**Stainless steel drawer-style dishwasher**  
**Residential stainless steel French door refrigerator** w/freezer drawer, water and ice dispenser  
**Cold water filtration system**  
**Double bowl stainless steel sink**

## Bath

**Corian countertop and decorative backsplash**  
**BIG Shower** 42"x30" (42QD)  
**BIG Shower** 42"x36" (45RD)  
**Handheld flexible showerhead**  
**Textured glass shower door**  
**Skylight**  
**Porcelain toilets** w/electric flush  
**Area rug** (master bath)  
**Linen cabinet**  
**Medicine cabinet**  
**Robe hook(s)** (42QD)  
**Soap dispenser**  
**Tissue holders**  
**Towel bar(s)**  
**Towel ring(s)**

## Bedroom

**28" HDTV** (42QD)

**43" HDTV** (45RD)

**Ceiling fan**

**Powered king bed** w/Ideal Rest® Natural Reserve digital comfort control mattress and remote controls

**Bedsread, pillows, and shams**

**Headboard**

**Wardrobe**

## Exterior

**Entertainment center** 40" HDTV and home theater soundbar system w/AC duplex receptacle and wireless subwoofer

**Auxiliary docking lamps**

**Driver side service bay lights**

**2 powered acrylic patio awnings** w/motion sensors, LED lights, metal wrap

**Powered acrylic entrance awning** w/LED lights

**Acrylic window awnings**

**KeyOne™ lock system**

**90" x 54" slideout storage compartment tray** (extends out either side of the coach) (42QD)

**90" x 76" slideout storage compartment tray** (extends out either side of the coach) (45RD)

**Lighted storage compartments**

**Storage containers** w/lids

**7' folding stepladder**

**Lighted assist handle**

**Porch and stepwell lights** w/interior switch

**Automatic entrance steps**

**Lower front protective mask**

**Premier clearcoat automotive finish**

**Rear mud flaps**

**Full-width rear mudguard** w/stainless steel logo

**Polished stainless steel on lower valance doors and panels**

### OPTIONAL EQUIPMENT

**Ladder** (rear cap mounted)

## Heating & Cooling System

**TrueAir® Maximum Comfort A/C 3-13,500 BTU roof air conditioners w/2 heat pumps and 3 condensation pumps**

**Aqua-Hot® 450 hydronic dual-zone heating system** w/continuous hot water and engine pre-heat

**Triple-zone thermostat**

## Electrical System

**Service Center** 120-volt AC power, cable input, QuickPort® service connection hatch, portable satellite dish hookup

**Shoreline/generator automatic changeover switch** w/Surge Guard®

**PowerLine® Energy Management System**

**Auxiliary start circuit**

**50-amp. power cord** w/power cord reel

**2,800-watt Pure Sine inverter/charger** w/remote panel

**10,000-watt Cummins Onan® Quiet Diesel™ generator**

**Powered generator slideout mechanism**

**AC/DC electrical distribution system**

**6-12-volt deep-cycle Marine/RV AGM (Absorbed Glass Mat) sealed batteries** (maintenance-free)

**Battery disconnect system** w/neutral loss protection (coach and chassis)

**Automatic dual-battery charge control**

**Chassis battery charger/maintainer**

**Automatic generator start system**

**Exterior TV jack**

### OPTIONAL EQUIPMENT

**100-watt solar panel battery charger**

## Plumbing System

**Service Center** multi-plex switch panel, lighted, monitor panel, pressurized city water hookup w/diverter fill, freshwater drain, drainage valves, exterior wash station w/pump switch, glove holder, holding tank flushing system, paper towel holder, 20' sewer hose w/QuickConnect®, QuickPort service connection hatch, soap dispenser

**TrueLevel™ holding tank monitoring system**

**Water supply hose** w/reel

**Full coach water filtration system**

**20-lb. removable LP tank** w/shut-off valve

**LPG accessory connection** (patio area)

**On-demand water pump**

**Winterization Package** water heater bypass, valve and siphon tube

**Heated holding tank compartment**

**Safety**

**LP, smoke, and carbon monoxide detectors**

**10 BC fire extinguisher**

**Ground fault interrupter**

**Daytime running lamps**

**Fog lamps**

**High-mount brake lamps**

## WARRANTY<sup>7</sup>

**12-month/15,000-mile basic limited warranty<sup>8</sup>**

**36-month/36,000-mile limited warranty on structure<sup>8</sup>**

**10-year limited parts-and-labor warranty on roof skin<sup>8</sup>**

### FOOTNOTES

- The height of each model is measured to the top of the tallest standard feature and is based on the curb weight of a typically equipped unit. The actual height of your vehicle may vary by several inches depending on chassis or equipment variations. Please check with your dealer for further information.
- Floorplans feature a wide-body design - over 96" In making your purchase decision, you should be aware that some states restrict access on some or all state roads to 96" in body width. Before making your purchase decision, you should confirm the road usage laws in the states of interest to you.
- The load capacity of your motorhome is designated by weight, not by volume, so you cannot necessarily use all available space when loading your motorhome.
- Capacities are based on measurements prior to tank installation. Slight capacity variations can result due to installation applications.
- Capacities shown are tank manufacturer's listed water capacity (W.C.). Actual filled LP capacity is 80% of listing due to overfilling prevention device on tank.
- Actual towing capacity is dependent on your particular loading and towing circumstances which includes the GVWR, GAWR, and GCWR as well as adequate trailer brakes. Please refer to the Operator's Manual of your vehicle for further towing information.
- See separate chassis warranty.
- See your dealer for complete warranty information.

NA Not Available

Not all items available in combination. See dealer for details.

Winnebago's® continuing program of product improvement makes specifications, equipment, model availability, and prices subject to change without notice. Published content reflects the most current product information at time of printing. Please consult your dealer for individual vehicle features and specifications.







Let us host your next

# Adventure



[WGOAdventures.com](http://WGOAdventures.com)



# WINNEBAGO

RV INSURANCE



From RV to personal insurance, Winnebago RV Insurance can provide all the coverage and services you need to feel at home on the road.

**For more information:**  
**(800) 642-4892**

Connect with Winnebago (Click one of the following)



Like us



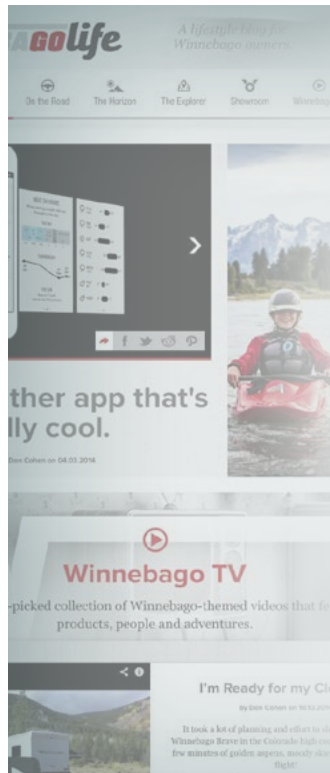
Follow us



Watch us

## WinnebagoInd.com Has All The Answers

Visit [WinnebagoInd.com](http://WinnebagoInd.com) on your computer, smartphone, or tablet for the latest product information and updates.



## Welcome to GoLife!

Visit our lifestyle blog for motorhome news, personal travelogues, and community stories.

[WinnebagoLife.com](http://WinnebagoLife.com)

# GoLife

# **PREFERRED CARE PROGRAM**

We back our motorhomes with best-in-class support both before and after the sale:

- 12-month/15,000-mile basic limited warranty
- 36-month/36,000-mile limited warranty on structure
- 10-year limited parts-and-labor warranty on fiberglass roof
- Complimentary 24-hour roadside assistance program
- TripSaver® Fast Track Parts guarantees that in-stock warranty parts ship directly to your dealer within 24 hours
- National dealer service network



For more information:  
[WGOService.com](http://WGOService.com)



## **WIT CLUB**

### Join the Club, Join the Fun

Here's the perfect way to begin your life on the road as the owner of a new Winnebago – by joining the exclusive WIT Club. Start your adventure with other fun-loving WIT Club members from across the country and get the most out of your new Winnebago motorhome.



#### Members enjoy:

- Caravans and rallies
- Newsletters
- Local and state group activities
- RV travel benefits

See more at  
[WITClub.com](http://WITClub.com)



### Grand National Rally

Each year, thousands of Winnebago owners descend upon Forest City, Iowa. Rally-goers enjoy an unforgettable week reconnecting with friends, taking tours, participating in activities, and more. Join the adventure next July!

# **WINNEBAGO**<sup>IND</sup>

## CONTACT US

### GENERAL INQUIRIES

Corporate Switchboard  
(641) 585-3535

### CURRENT PRODUCT OWNER AND SERVICE-RELATED INQUIRIES

(800) 537-1885  
or [winnebagoind.com](mailto:winnebagoind.com)

### NEW VEHICLE SALES INQUIRIES

[sales@winnebagoind.com](mailto:sales@winnebagoind.com)

### FAX

(641) 585-6966

### POSTAL ADDRESS

Winnebago Industries, Inc.  
P.O. Box 152  
Forest City, IA 50436

### STREET ADDRESS

Winnebago Industries, Inc.  
605 West Crystal Lake Road  
Forest City, IA 50436

# **LA MESA RV**

EXPERIENCE LIFE  
[www.lamesarv.com](http://www.lamesarv.com)  
800-496-8778